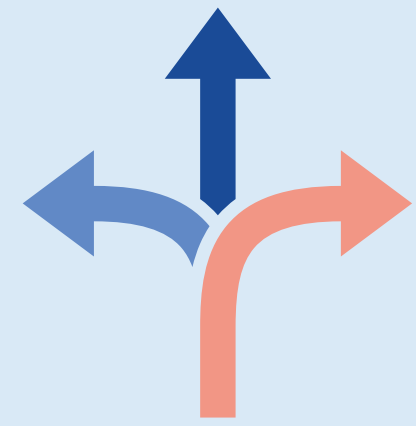


POST-COVID-19 FUTURES COMMISSION

Key Attributes of Resilience

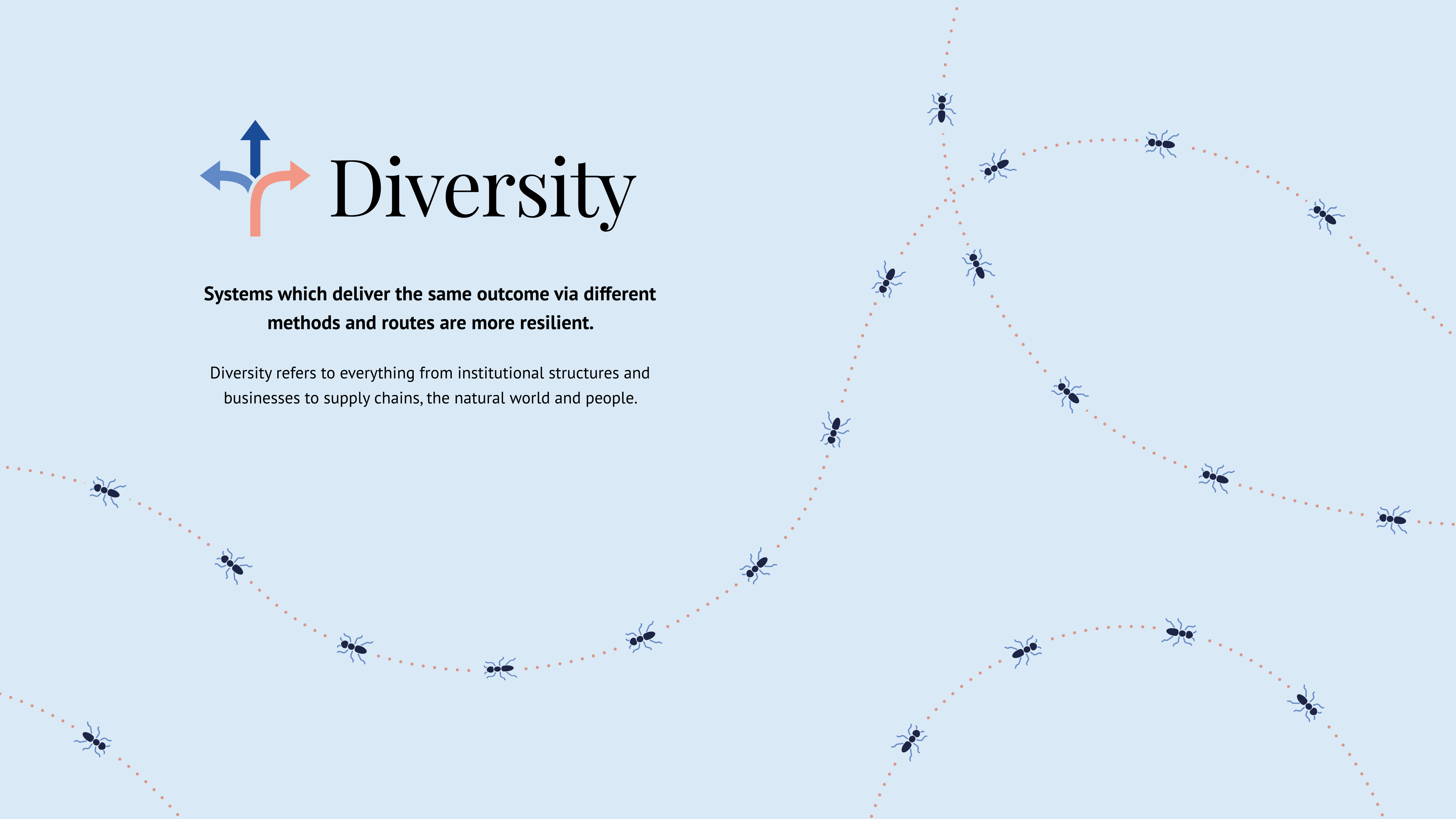


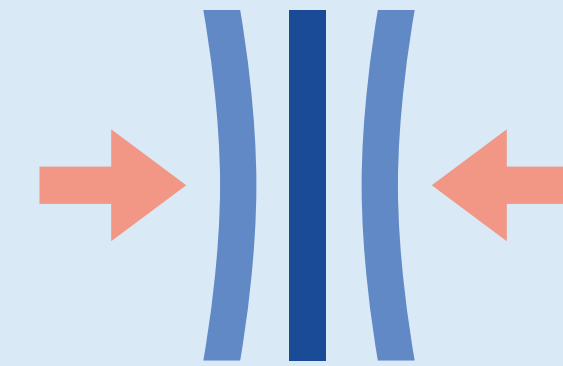
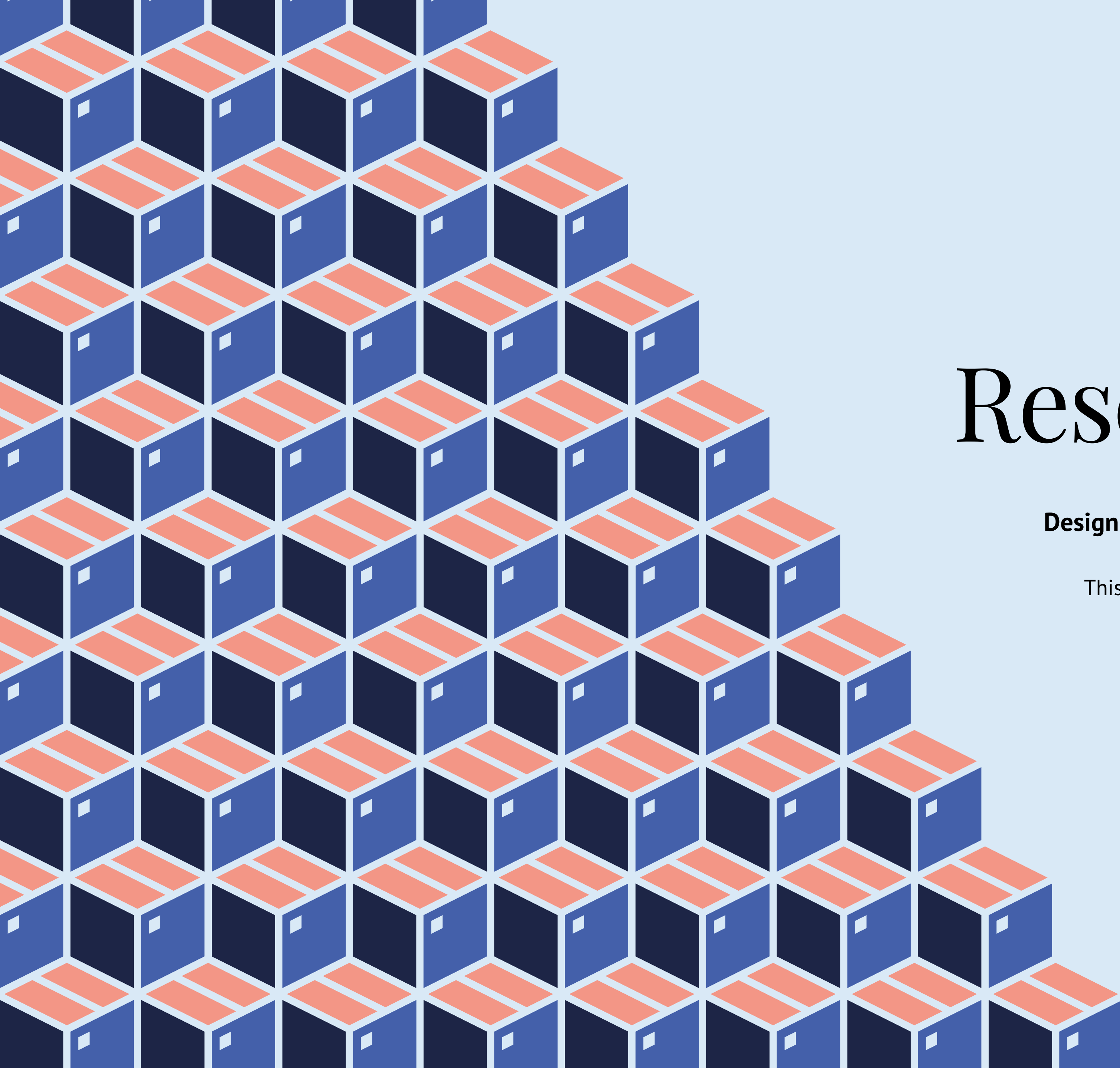


Diversity

Systems which deliver the same outcome via different methods and routes are more resilient.

Diversity refers to everything from institutional structures and businesses to supply chains, the natural world and people.

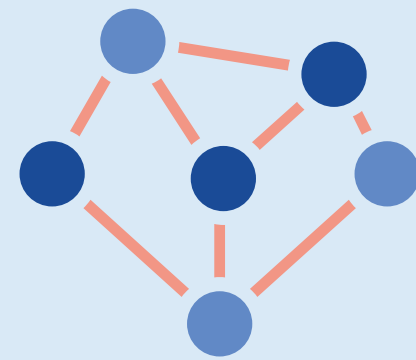




Reserve Capacity

Designing systems that can flex in response to stress.

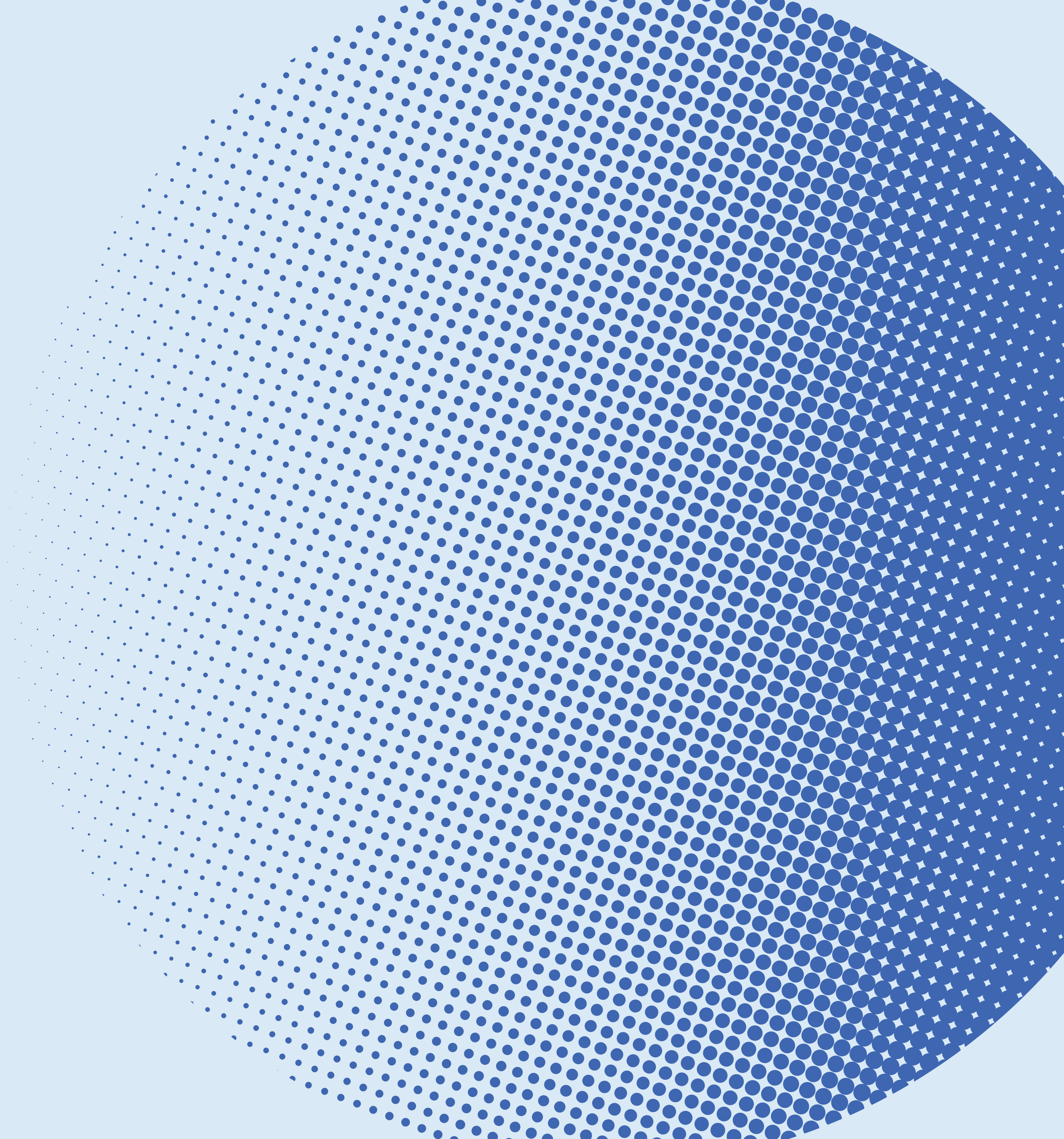
This includes creating strategic reserves and sufficient stocks to buffer against supply shortages.

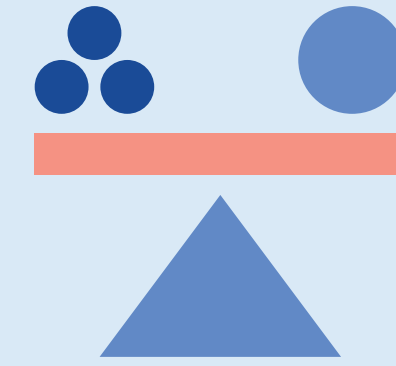
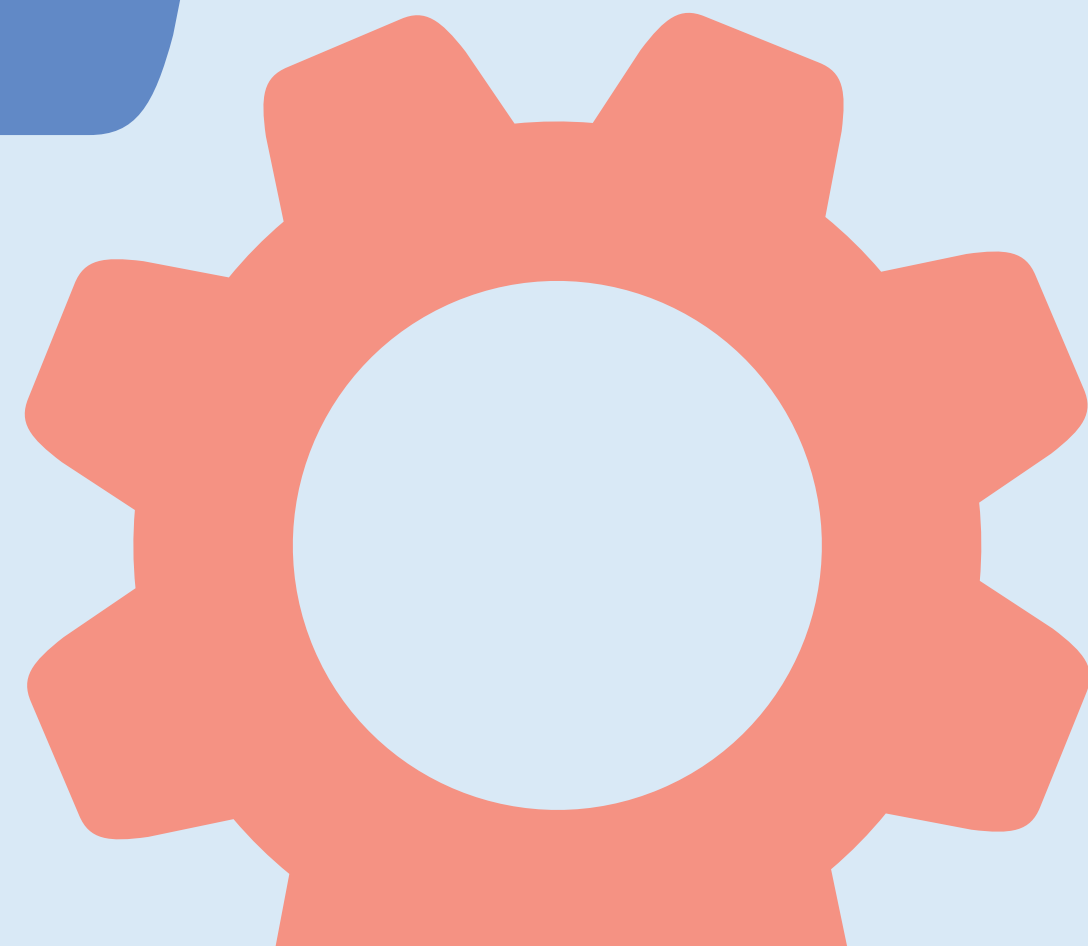
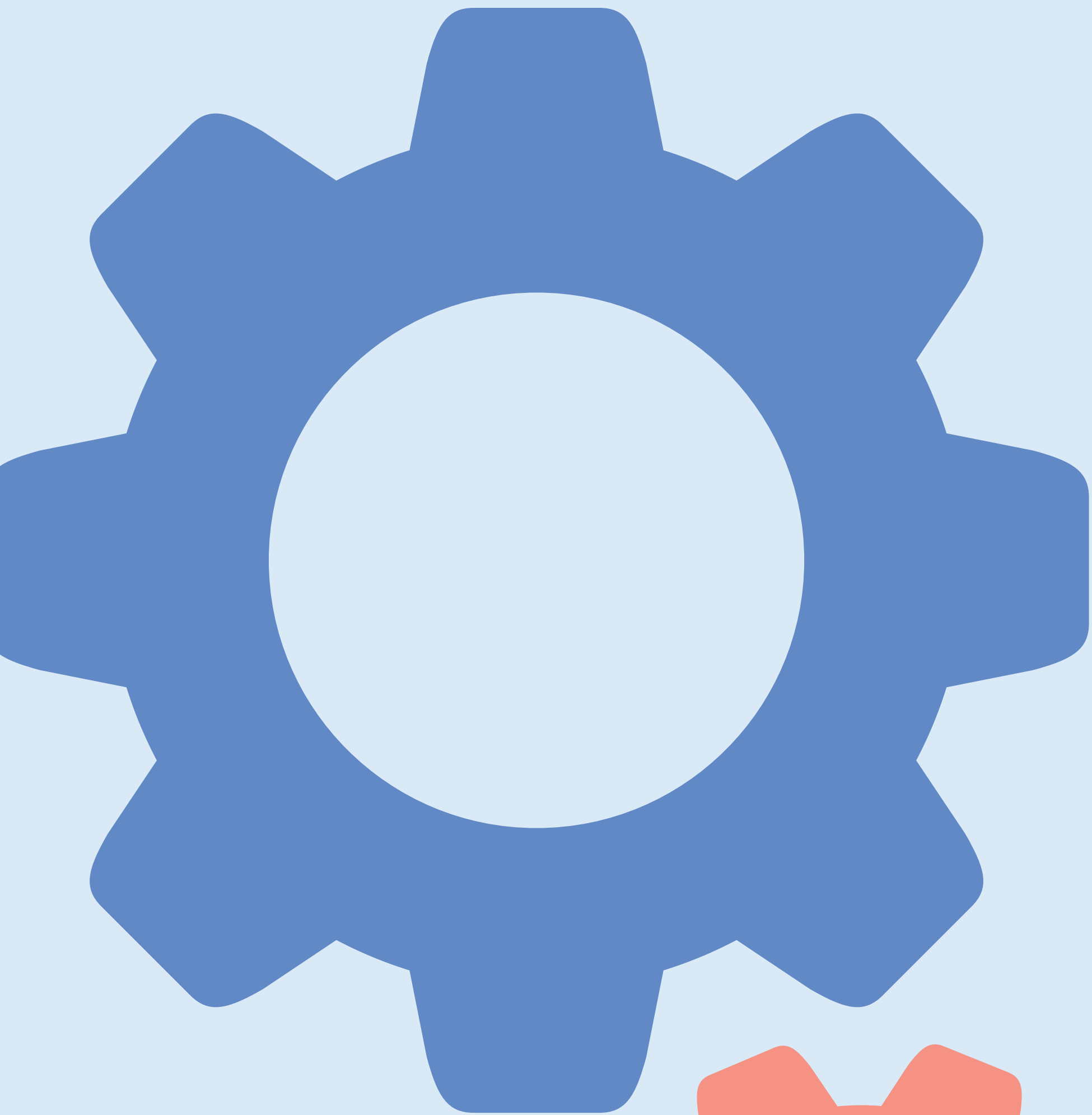


Connectivity

Well-designed and well-managed connectivity can increase reserve capacity and diversity, providing a buffer against localised stresses.

For example, energy supply grids which have trans-national interconnectors that can allow power to flow between different national grids provide resilience to cope with short-term power shortages.





Inclusiveness, Equity & Fairness

Social policies which sustain but also value those in the most marginalised communities need to focus on the power, agency and justice of those who are most disadvantaged. This will help build resilience at both an individual and community level.

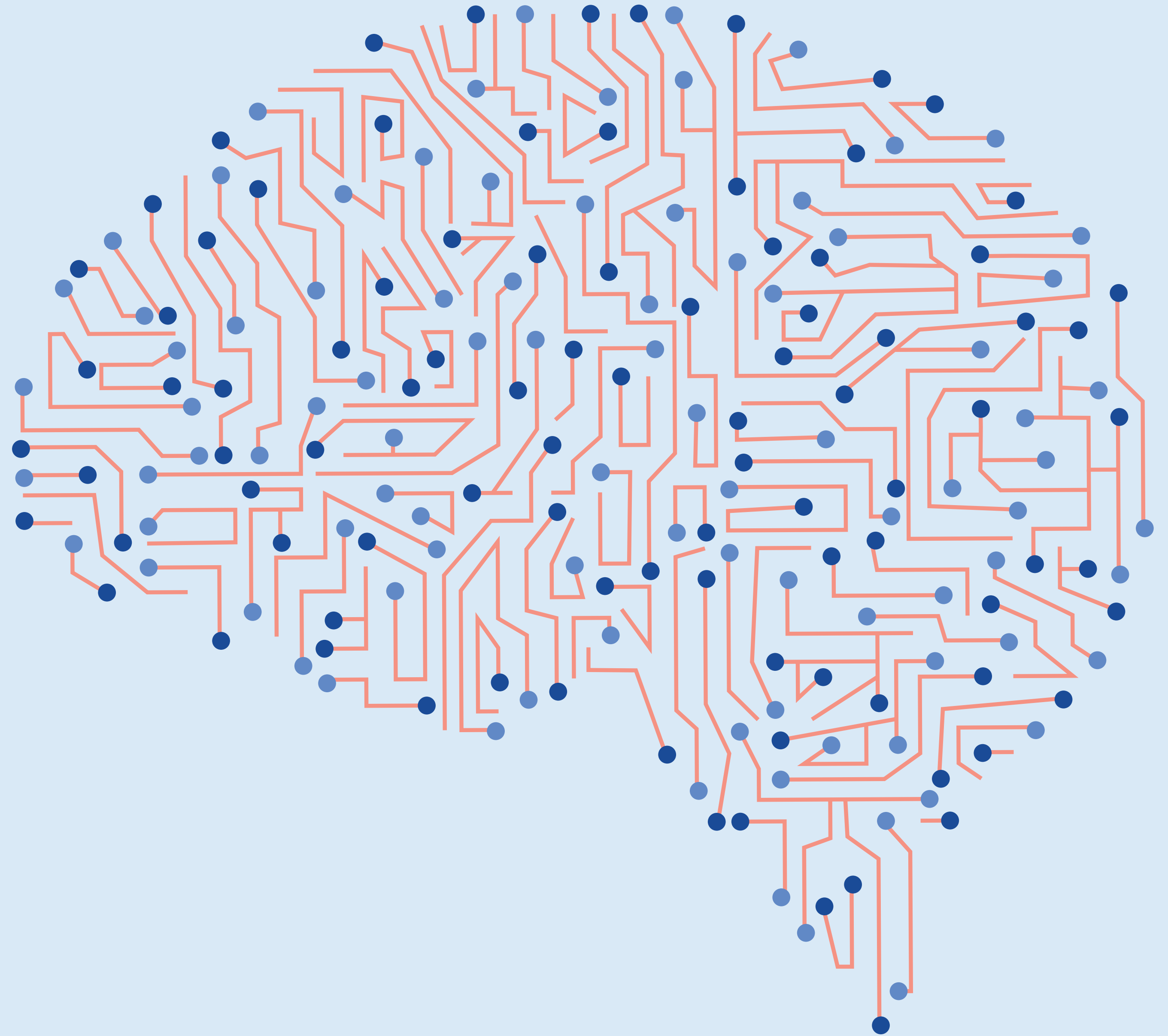
Preventative approaches and early intervention should be used wherever possible to support people and communities.

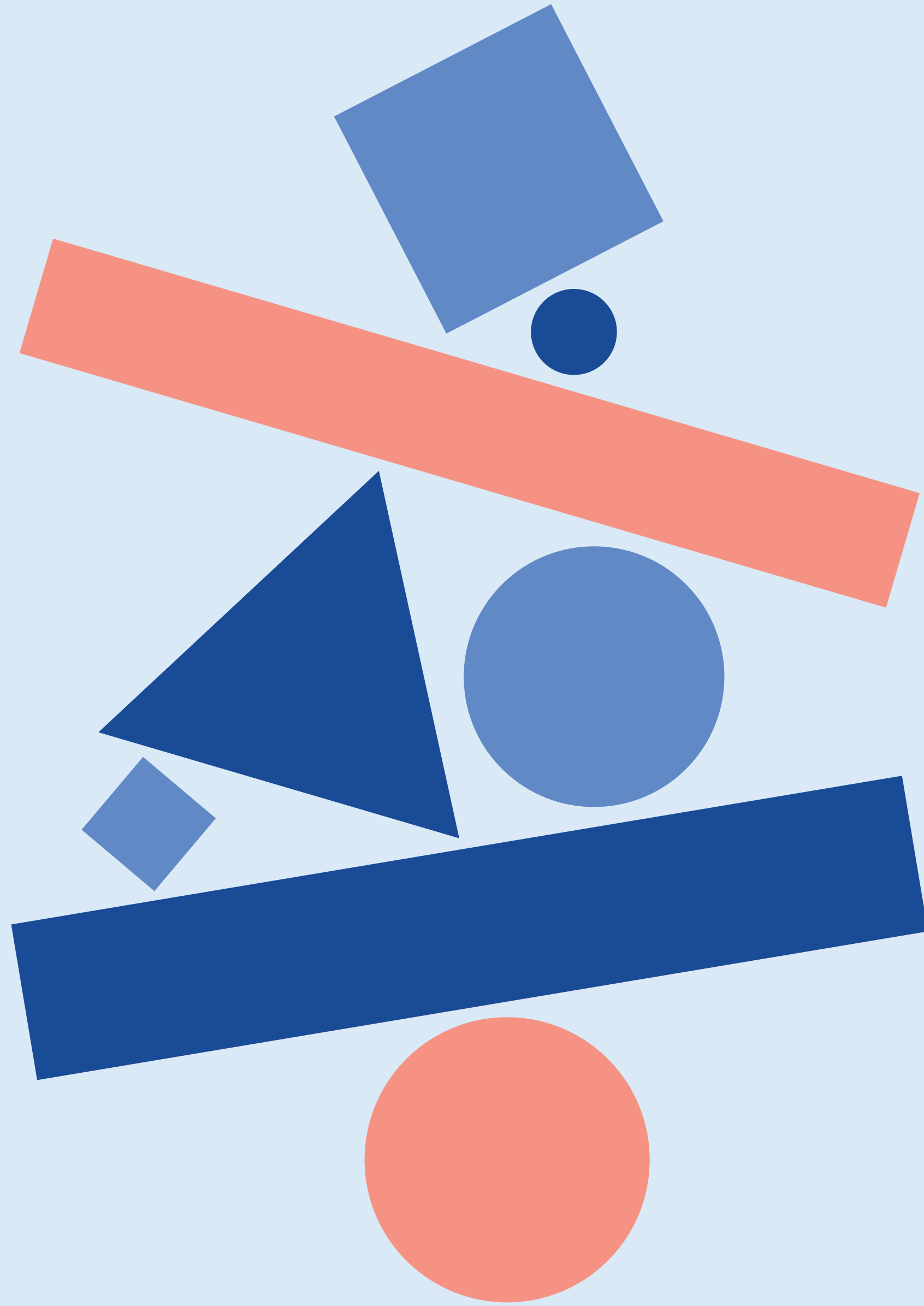


Adaptive Learning

Resilience requires rapid adaptation to changes when they happen to reduce negative impacts. Resilient societies can rapidly adapt and learn, becoming more resilient with each challenge they face.

The rapid adoption of new technologies and especially digital resources has been a key feature of adaptation in response to the pandemic.





Culture of Preparedness

Preparedness means the proactive planning and management of resilience in the face of a wide-range of risks.

This requires clear roles for everyone – from Governments to local communities – and high levels of data-sharing, coordination and collaboration.